

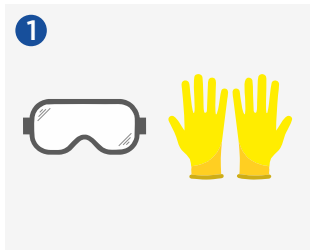


RINSE GC

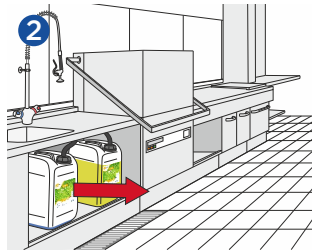
Ecological automatic dishwasher rinse aid

GREEN'R Rinse GC is ideal for use in both professional-grade dishwashers and glass washers. It effectively removes detergent residues, facilitates rapid drying of dishes without leaving any streaks, and restores their natural shine.

METHOD OF USE



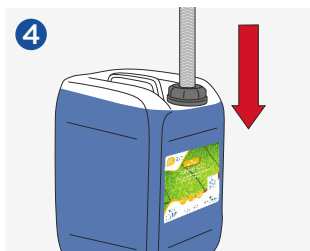
1 Wear correct PPE when changing dishwashing tubes.



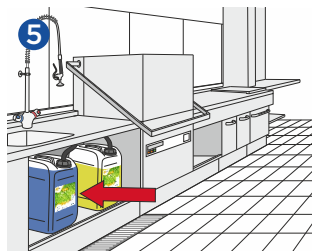
2 Turn off the dishwasher and remove the existing rinse aid.



3 Carefully remove the dishwashing tube out of the GREEN'R Rinse GC container.



4 Place the tube into the new container of GREEN'R Rinse GC.



5 Put the GREEN'R Rinse GC back by the dishwashing machine.



6 Run the dishwasher cycle to ensure the product is pulling through.

DOSAGE

WATER HARDNESS	
SOFT	0.1 g/L - 0.1 mL/L
HARD	0.3 g/L - 0.3 mL/L

PRODUCT INFO



Pack Size: 5L, 20L

Odour: Slight
 Colour: Blue
 pH (undiluted): 2.1 - 3.5
 Shelf life: 2 years

SKU:

CLOECORINSE5L 5L

CLOECORINSE20L 20L



MACHINE
WARE
WASHING

RINSE GC

AUTOMATIC DISHWASHER RINSE AID.



- FORMULATED WITH ECO-FRIENDLY INGREDIENTS
- FAST DRYING
- SPARKLING FINISH
- ECOLABEL: BE/038/001

PRODUCT DESCRIPTION

GREEN'R offers an answer to the new, ecological hygiene standards with an extensive range of well-performing eco labelled products. The products are nontoxic and do not harm the environment.

GREEN'R Rinse GC should be used at the end of the dishwasher cycle to remove detergent residues, enhance rapid drying, and achieve a sparkling finish.

INSTRUCTIONS FOR USE

Recommended dosages: Water hardness

Soft water: 0.1 g / L – 0.1ml/L

Hard water: 0.3g/L – 0.3ml/L

This product should be used via automatic dosing equipment in combination with GREEN'R Autodish S. It is important to also respect the recommended rinsing temperature: 75-85 ° C. Please contact your local sales representative for further information.

ADDITIONAL INFORMATION

pH Level: 2.1- 3.5

SKU:

CLOECORINSE5L 5L

CLOECORINSE20L 20L